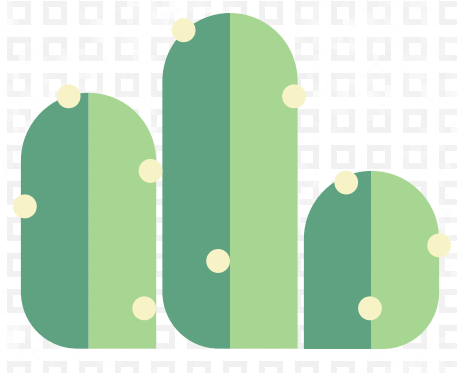
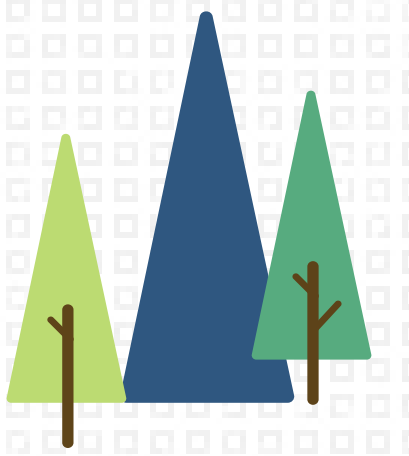


# Community Profile for Child Maltreatment Prevention



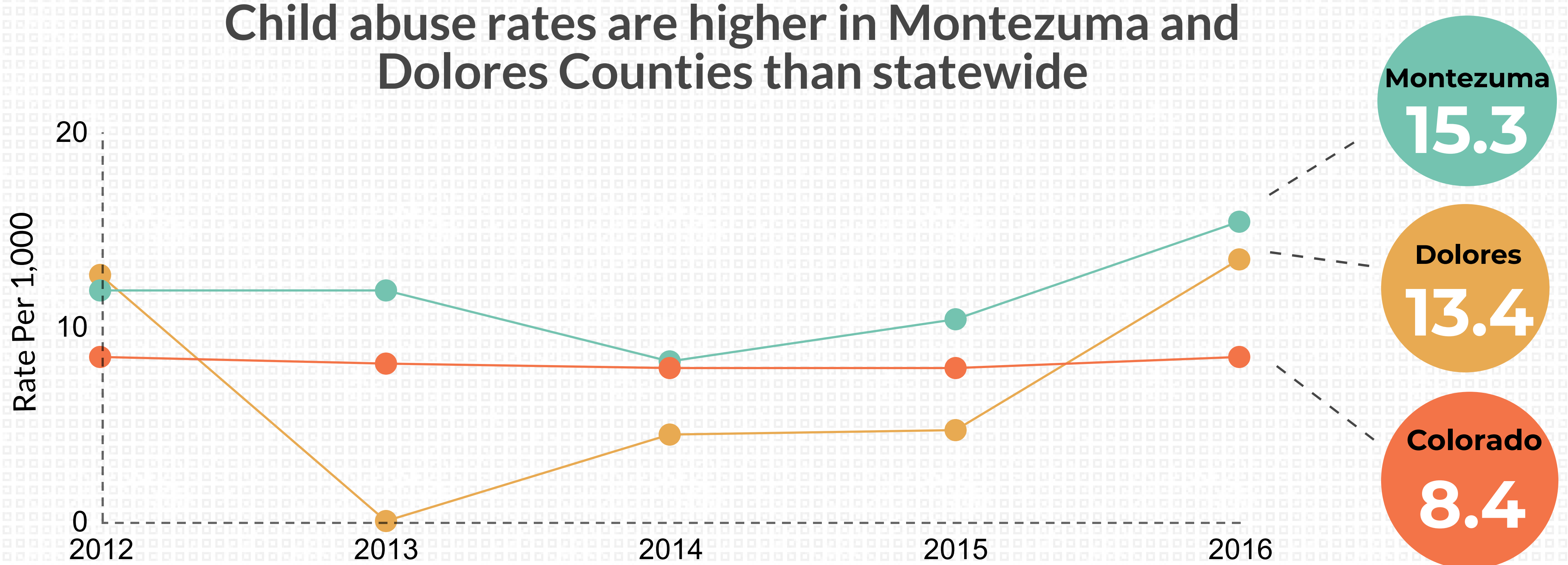
## Dolores & Montezuma Counties



### Child Maltreatment in the Community

Child maltreatment is abuse and neglect in any act or series of acts of commission or omission by a parent or other caregiver (e.g., clergy, coach, teacher) that results in harm, potential for harm, or threat of harm to a child.<sup>1</sup>

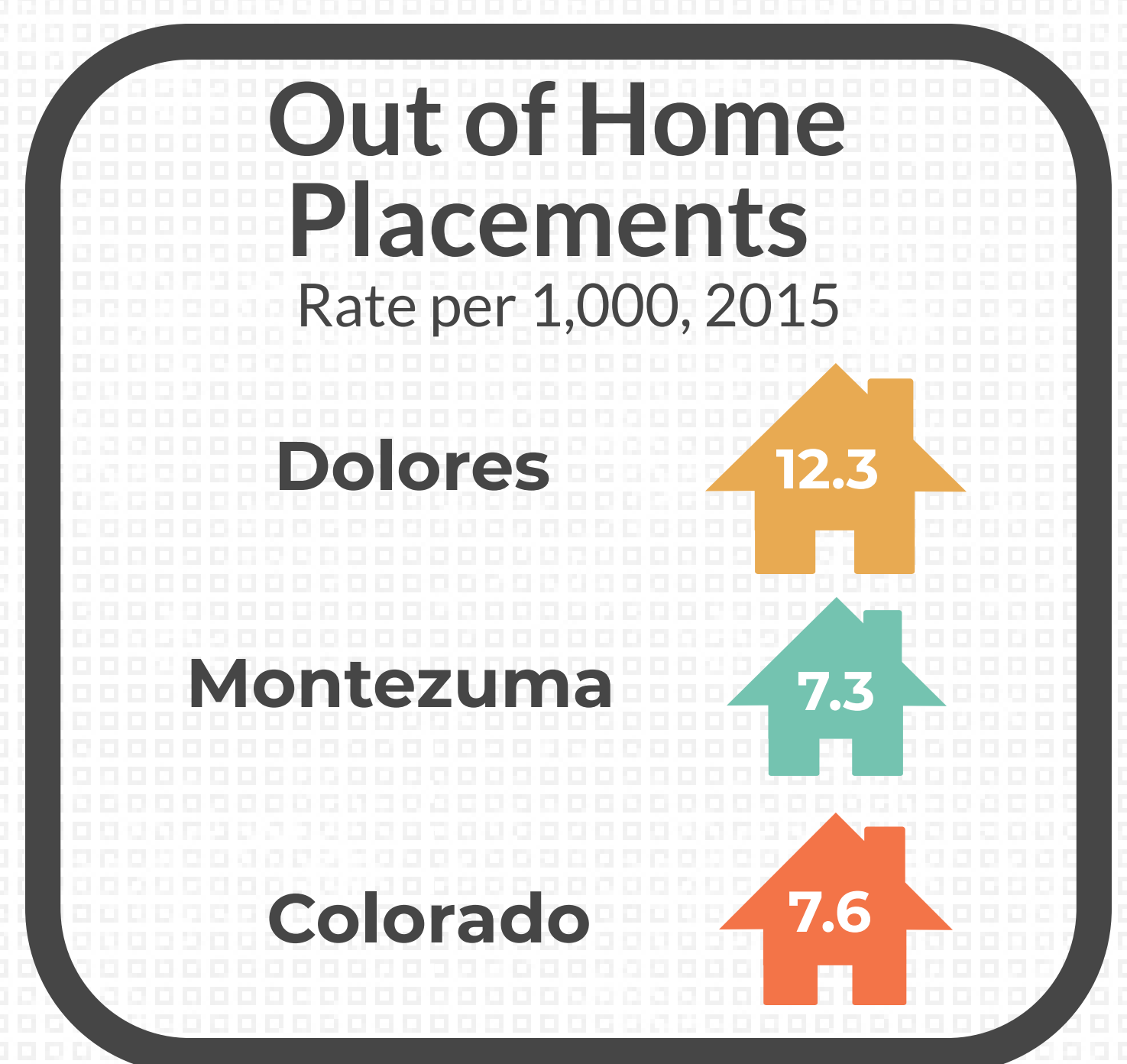
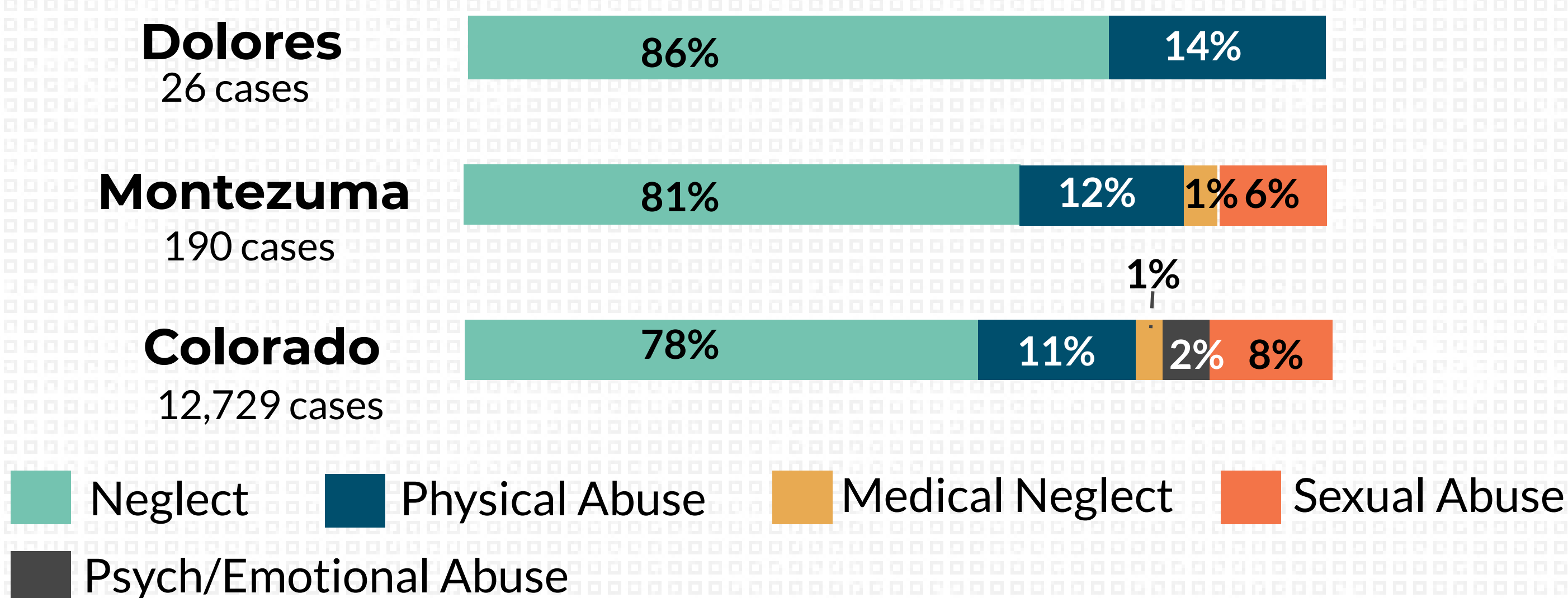
#### Child abuse rates are higher in Montezuma and Dolores Counties than statewide



	Dolores	Montezuma	Colorado
<b>2016-17</b> # of children assessed	21	486	56,975
% of cases substantiated	33%	20%	22%

#### Neglect is the most common type of child maltreatment allegation

Percent of substantiated allegations of maltreatment by type, 2016-17



1. Leeb RT, Paulozzi L, Melanson C, Simon T, Arias I. Child Maltreatment surveillance: uniform definitions for public health and recommended data elements, version 1.0. Atlanta (GA): Centers for Disease Control and Prevention, National Center for Injury Prevention and Control; 2008

# Risk Factors for Children and Families

## Child Risk Factors



- Premature birth
- Low birth weight
- Exposure to toxins in utero
- Age
- Physical disability
- Chronic/serious illness

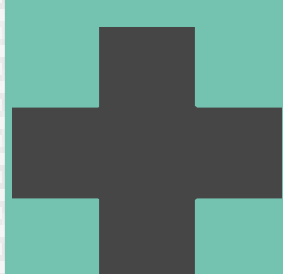


- Antisocial peer group
- Childhood trauma



- Child aggression
- Behavior problems
- Attention deficits
- Cognitive/emotional disability

## Parent & Family Risk Factors



- Substance abuse
- High stress
- Depression/anxiety
- Parental psychopathology
- Childhood history of abuse
- Age



- Separation & divorce
- Domestic violence
- Poor parent-child interaction
- Lack of social support
- Insecure attachment with own parents



- Inaccurate knowledge about child development

## Social & Environmental Risk Factors



- Stressful life events
- Exposure to environmental toxins



- Exposure to racism
- Social isolation
- Dangerous neighborhood
- Community violence
- Poor schools



- Low socioeconomic status
- Lack of access to health care and social services
- Parental unemployment & homelessness

# Protective Factors for Children and Families

## Child Protective Factors



- Good health
- Adequate development



- Good peer relationships
- Good social skills
- Easy temperament
- Positive disposition



- Above-average intelligence
- Hobbies & interests
- Active coping style

## Parent & Family Protective Factors



- Secure attachment
- Extended family support and involvement
- Stable relationship with parents



- High parental education



- Supportive family environment
- Household rules & structure
- Family expectations of pro-social behavior

## Social & Environmental Protective Factors



- Good schools
- Supportive adults & role models



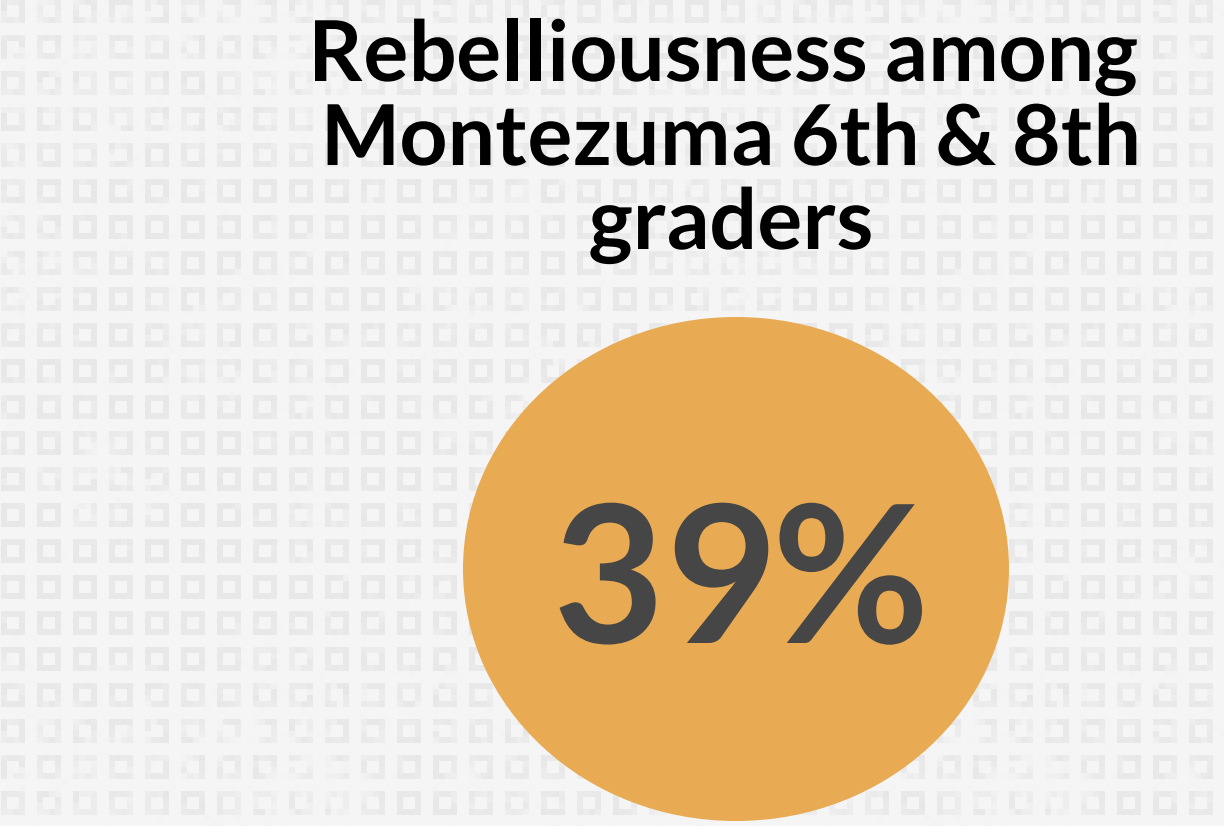
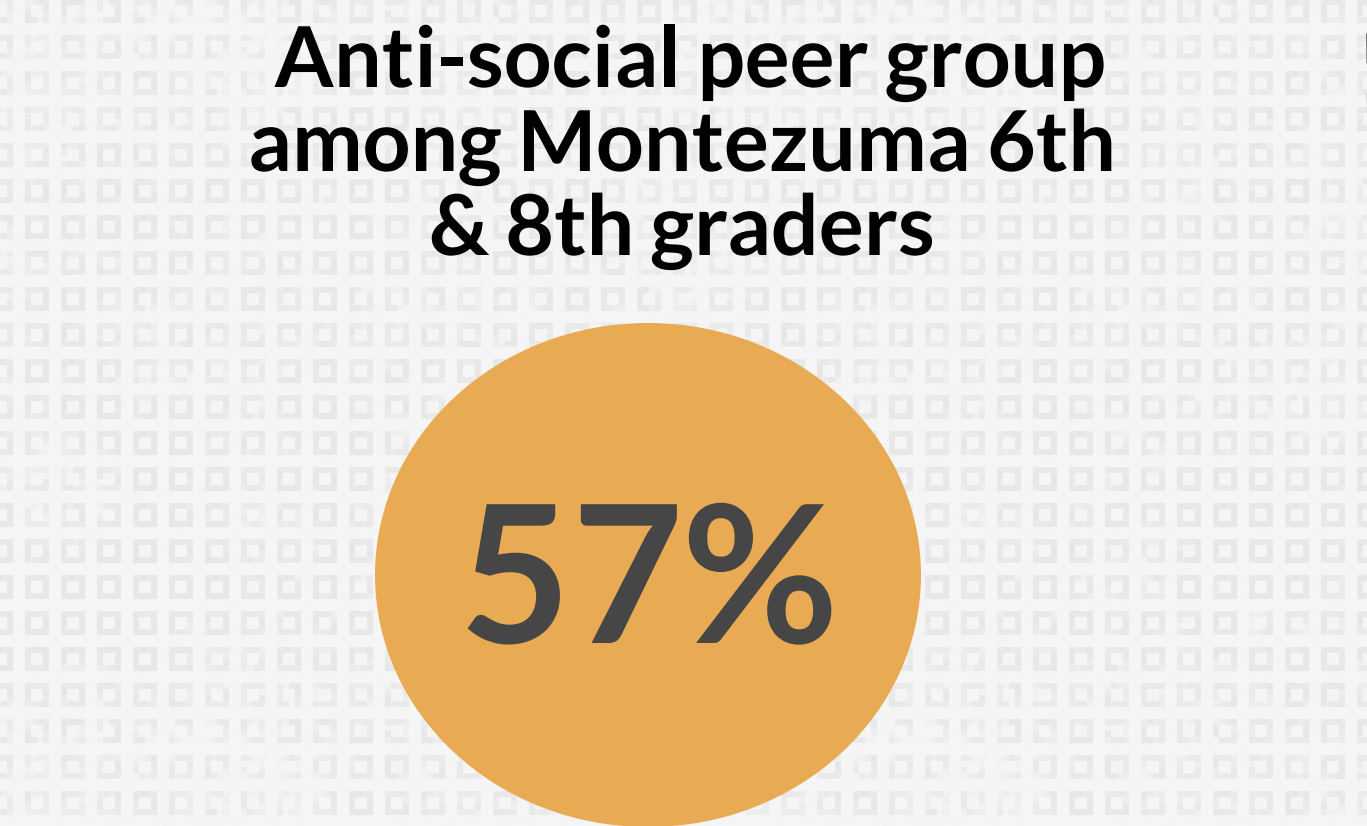
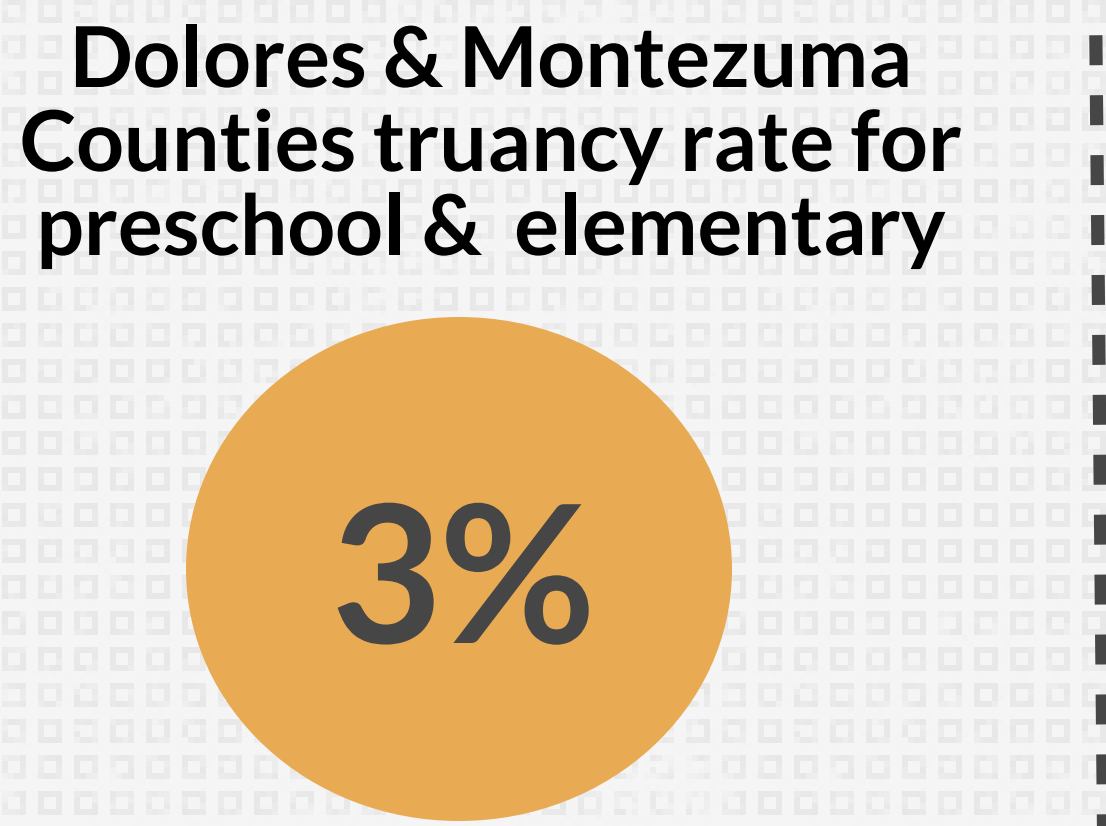
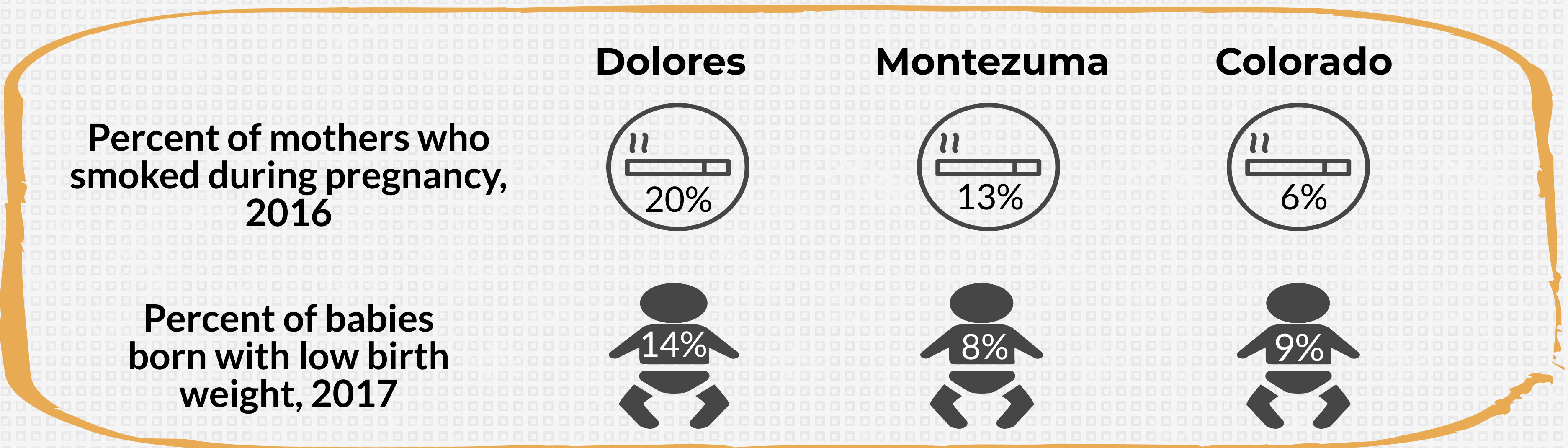
- Mid-high socioeconomic status
- Access to health care and social services
- Consistent parental employment



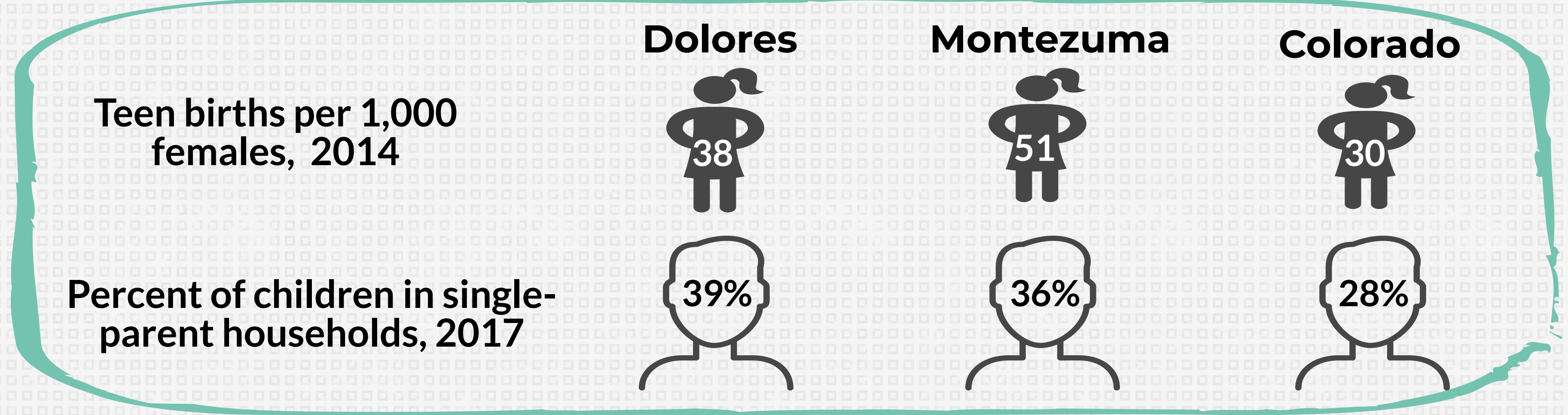
- Religious faith participation

# Risk and Protective Factors in Dolores & Montezuma Counties

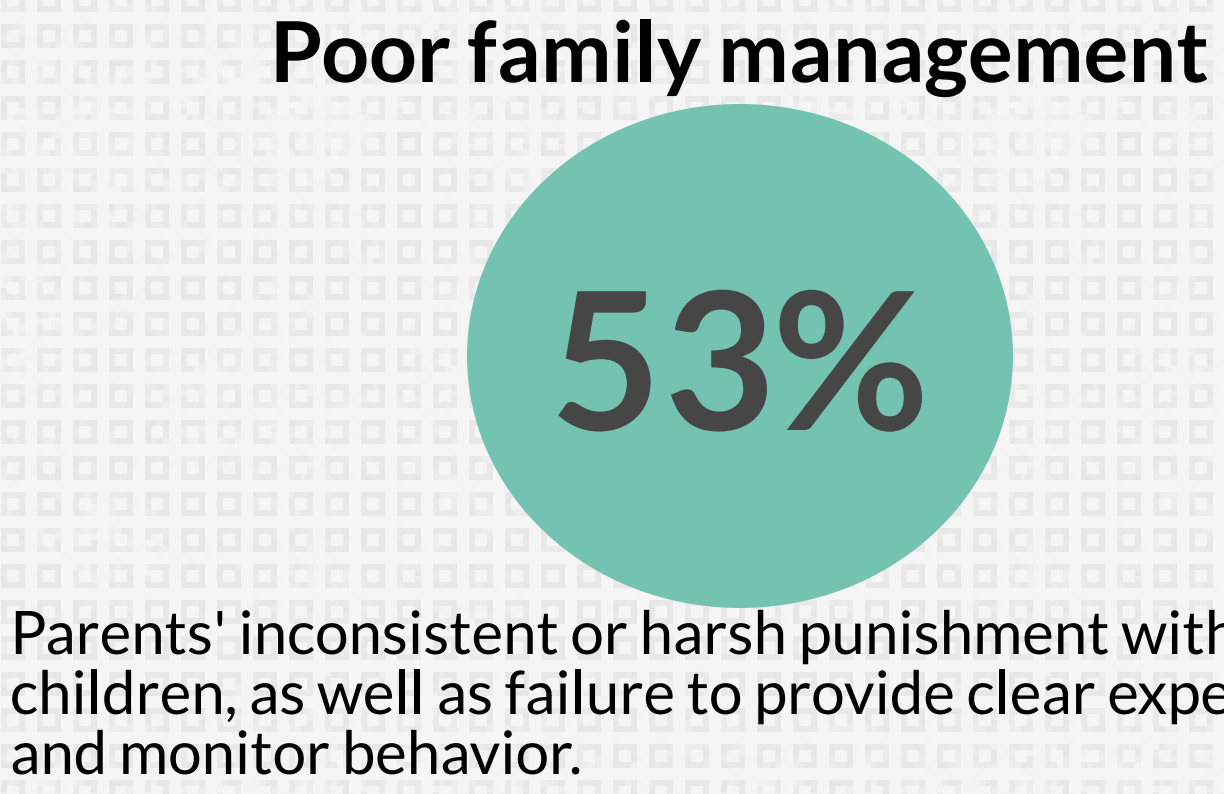
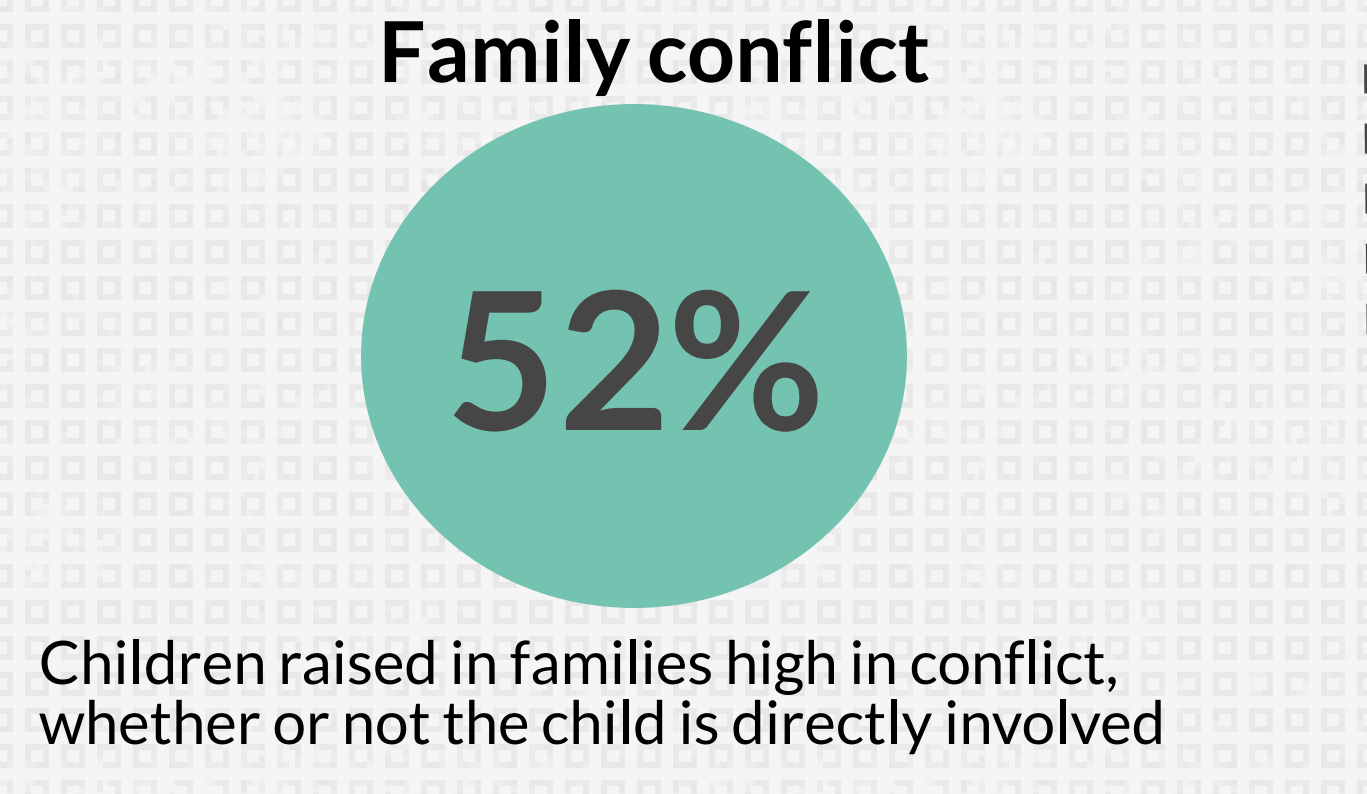
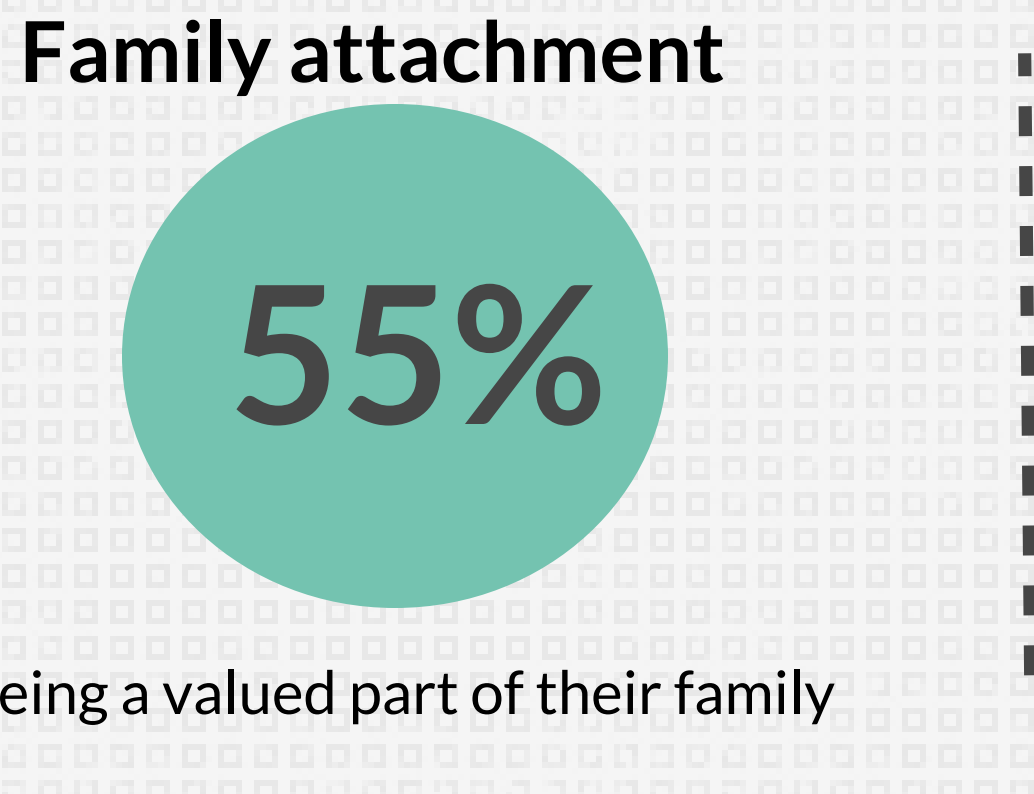
## Child Factors



## Parent & Family Factors



### Montezuma County 6th and 8th graders, 2017:



## Social & Environment Factors



	Dolores	Montezuma	Colorado
Violent crime offenses per 100,000 population, 2014	66	200	309
Percent of population <65 years uninsured, 2014	16%	17%	12%
Child poverty (under 18), 2016	20%	25%	13%
Unemployment, 2015	3%	6%	4%
Median income, 2016	\$46,800	\$40,700	\$65,700
Homeless students, 2016	0	44	23,954

# Resources for Child Maltreatment Prevention

## Montezuma County Public Health



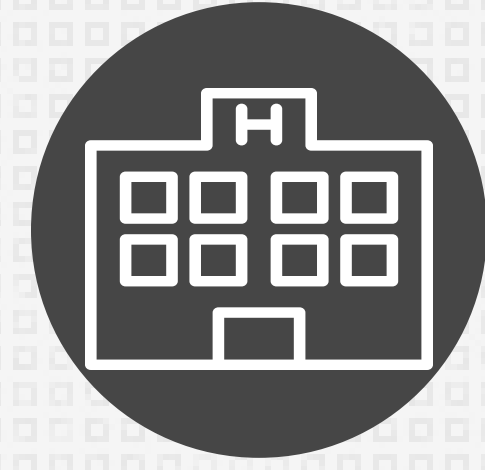
- Nurse Family Partnership
- Bright by Three
- Nurturing Parents and Adolescence Class
- Safe Care
- Resource/Referral process in Public Health Nurses

## Montelores Early Childhood Council



- Family Leadership Training Institute
- Child Mental Health Consultation
- Early Childhood Fair

## Axis Health System



- Parent and Adolescent Dialectical Behavior Therapy

## The Piñon Project



- Incredible Years
- Alphabet Soup
- Parents As Teachers
- Strengthening Families
- Fatherhood
- Successful Families
- Mentoring: Youth Empowerment Project
- Colorado Community Response
- Supervised Visitation

## Community

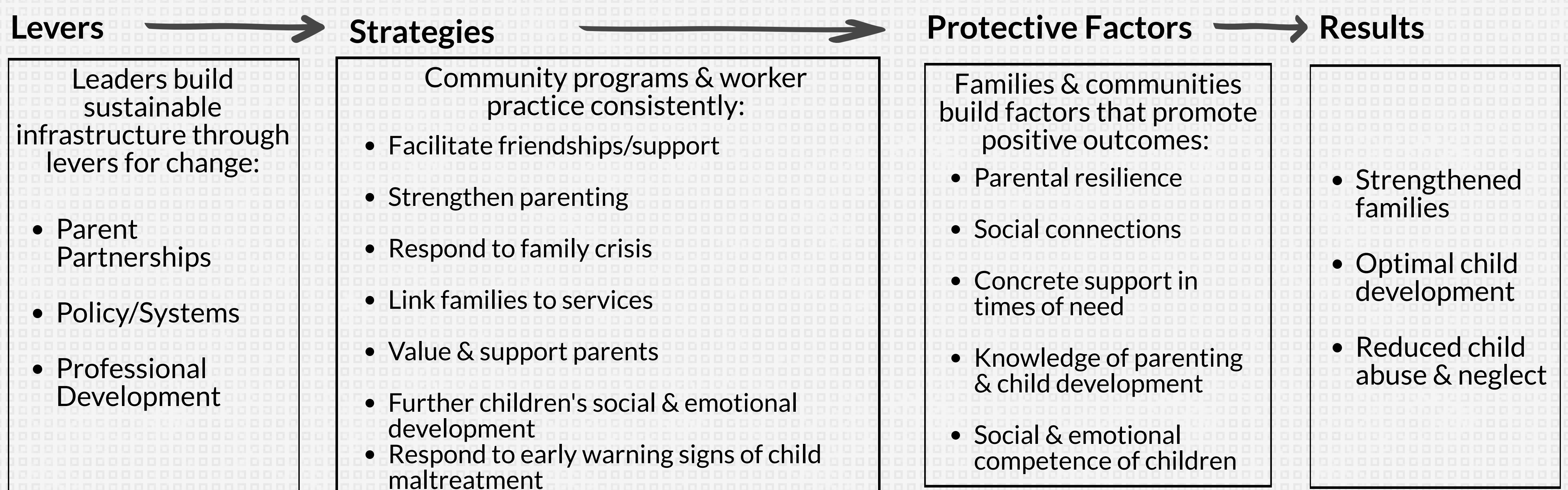


- Head Start
- Colorado Preschool Program
- Child Care Assistance Program
- Community Library Reading Programs
- Four Corners Child Advocacy Center
- Department of Human Services

# Strengthening Families Framework

## What is the Strengthening Families Approach?

- ▲ Benefits ALL families
- ▲ Builds on family strengths, buffers risk, and promotes better outcomes
- ▲ Can be implemented through small but significant changes in everyday actions
- ▲ Builds on and can become a part of existing programs, strategies, systems and community opportunities
- ▲ Is grounded in research, practice and implementation knowledge



## What are the Protective Factors of the Framework?

### Social Connections



### Parental Resilience

### Concrete Support in Times of Need



### Knowledge of Parenting & Child Development

### Social & Emotional Competence of Children

